

# MasterMinder MLC Intelligent Transponder Unit



**Catalogue No:**  
**ITU-1**

**Description:**

The MasterMinder MLC ITU-1 Connects via a Single Pair Cable (Figure 8 or Any 2 Wires) to the SCU.

The SCU Also Connects to the Mains (Preferably Single Phase But Can Be 2 or 3 Phase).

The ITU Communicates with Individual Emergency Luminaires and Exit Signs Using the Mains Wiring to These Fittings.

**Description:**

Length: 315mm

Width: 55mm

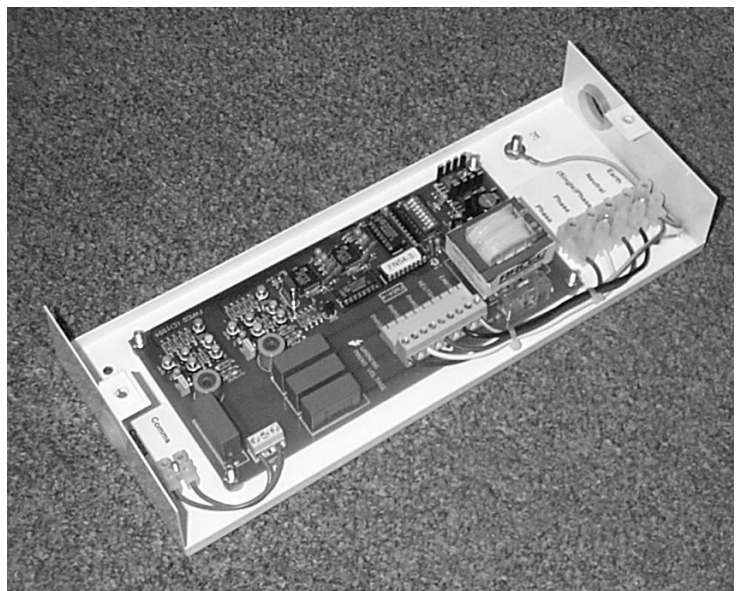
Depth: 125mm

**Connections:**

Connection to SCU: 2 way Terminal Block  
Mains Connections: 5-way Terminal Block (Earth, Neutral and 3 phases)

Australian conceived,  
designed & manufactured.

**[www.famco.com.au](http://www.famco.com.au)**



**FAMCO LIGHTING PTY LTD**

ACN 091 160 440 ABN 22 091 160 440  
100 Rupert St, Collingwood 3066  
(Melbourne), Victoria, Australia

T: (03) 9935 7300  
F: (03) 9935 7301  
E: [info@famco.com.au](mailto:info@famco.com.au)

Correspondence:  
P.O. Box 108,  
Abbotsford VIC 3067

© 2008 Famco Lighting Pty Ltd All rights reserved.  
E&OE. Subject to change without notice, to allow progress  
in design. This document and the information it contains is  
the property and copyright of Famco Lighting Pty Ltd and  
must not be used, copied, transmitted or reproduced  
without our written permission.